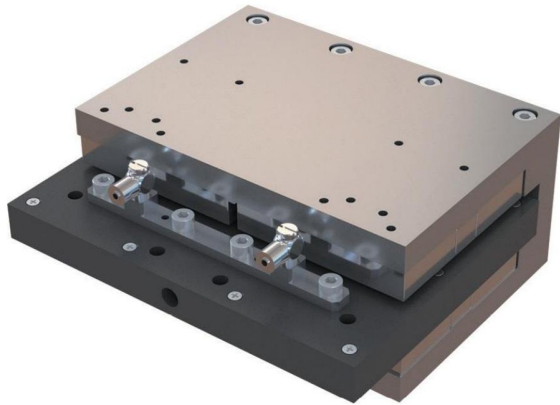


平面水冷式音圈电机



产品特点

- 采用超薄水冷板，具有高冷却效率高可靠性和寿命
- 极高的推力密度，极低的表面温升，实现更高连续力和峰值力。
- 适用于真空环境

参数

	单位	WVCM155-12	WVCM310-12
行程/Total Stroke	mm	±6	±6
间隙/Clearance of side of Coil	mm	3	3
连续推力/Continuous Force	N	155	310
峰值推力/Peak Force	N	320	640
推力常数/Force Constant	N/A	40.6	81.2
反电动势常数/Back EMF Constant	V/(m/s)	40.6	81.2
电阻/Electrical Resistance	ohms	4.92	4.91
电感/Electrical Inductance	mH	4.02	4
时间常数/Electrical Time Constant	ms	0.82	0.81
连续电流/Continuous Current	A	3.818	3.82
连续功率/Continuous Power	W	71.72	75.61
峰值电流/Peak Current	A	7.88	7.88
峰值功率/Peak Power	W	322.9	322.29
电压/Drive Voltage	V	41	40.89
电机常数/Motor Constant	Sqrt(N ² /W)	18.3	36.65
最小流量/Minimum Flow	L/min	1.2	1.2
压降/Pressure Drop	Bar	1.5	1.5
线圈重量/Weight of Coil Assembly	g	2370	2770
磁钢重量/Weight of Field Assembly	g	5608	11770